



**THMB01** Thursday 1 pm-3 pm

### **Candy Dish** **Tonya Cubeta**

This mini bonus class will be pre-started by already having the spokes stuck into the base. This will be a quick weave with a match-stick border. The focus will be on picking your bead colors and weaving them around the top.

Mini Bonus W 5" H 3" D 5"  
All Levels \$25



**THMB02** Thursday 1 pm-3 pm

### **Paper Stars** **Ann Bowers**

If you've always wanted to learn how to make these 3-dimensional stars, try out this class! Good directions will be provided as Anne shows you how to make them. One star will be made in class - paper for 2 additional stars will be given.

Mini Bonus D 4"  
All Levels \$20



**THMB03** Thursday 1 pm-3 pm

### **Six Decorative Handle Wrap Techniques** **Pati English**

Select two handle wrap designs and two oak handles of various sizes. Six designs included in the pattern: newest Triple-Triple Braid Weave, Ti-Twine Diagonal Wrap, Triple Braid Cane Wrap with new Dyed Handle Grip, Chevron Arrow a.k.a. Flying Geese Wrap, Double Cane Braid Wrap, and Twill Wrap. Add that special touch to your handwoven baskets with comfortable and decorative handles.

Mini Bonus W 8-10" H 12-14"  
All Levels \$44



**THMB04** Thursday 1 pm-3 pm

### **Business Card Basket** **Carolyn Kemp**

Students will weave a business card holder from pre-painted watercolor paper. Carolyn will paint many color options for students to choose from. This little basket is practical and fun to weave. Scissors, pencil and micro clips are needed. No water please.

Mini Bonus W 1 1/2" L 4" H 2"  
All Levels \$ 8



**THMB05** Thursday 1 pm-3 pm

### **Princess Crown** **Julie Kleinrath**

Woven on a wood base over a mold included with the class. Woven in a continuous weave pattern using space dyed reed. The basket is finished with a waxed linen lashing and 3 stacked beads. The lashing technique is a little tricky but sure is pretty when it is done. An assortment of space dyed reed and coordinating beads will be available to choose from.

Mini Bonus D 4" H 6"  
Beg/Int \$35



**THMB06** Thursday 1 pm-3 pm

### **Ms. Philo Rose** **Karen Kotecki**

Ms. Philo Rose is another philodendron embellishment to add to your tool kit. Learn to soak, twist, and fold philodendron sheaths into these charming flowers. Some hand-strength and stitching required to secure folds. Technique will transfer to other naturals and even ribbon. Four philo sheaths included.

Mini Bonus W 13/4" L 4"  
All Levels \$35



THMB11 Thursday 1 pm-3pm

### How to Make a Wrapped Start with Pine Needles

Pamela Zimmerman

Tired of always needing a "start" for coiling? Learn to make a basket "from nothing." This is the perfect spiral beginning traditional in many native forms. Work intensively on this technique, make as many starts as you can, coil the baskets later. (ONLY the start is made in class, not a basket.) Class includes a computer CD with video files to take home.

Mini Bonus D 2"  
All Levels \$23



THMB08 Thursday 1 pm-3 pm

### Napkin/Cookie Board

Marilyn Parr

Cute napkin holder makes a great gift! Made on a cutting board shape but will hold regular sized napkins, cookies, crackers, rolls, or whatever snack you would like to share. Use round reed for spokes, add some triple twine and flat reed. Finish with a braid that has a little different twist to it. Super easy and fast to weave.

Mini Bonus H 8 1/2" L 11 1/2" H 3 1/2"  
All Levels \$35



THMB09 Thursday 1 pm-3 pm

### Butterfly Kisses

Bonnie Rideout

Get ready for spring! This pretty little basket with an adorable butterfly will do just that. Techniques include: filling a base, twining and triple twining with an arrow weave. Fun for any level of weaver!

Mini Bonus W 5" L 7" H 4 1/2" w/o  
Beginner handle \$28



THMB10 Thursday 1 pm-3 pm

### Sweetie

Linda Scherz

A traditional Adirondack pack, Sweetie the newest in Linda's pack family is complete with custom leather harness. As you weave with reed, Linda will teach you her techniques to create this unique shaped basket with emphasis on technique and shape as you create a little belly. Techniques; plain weave, continuous weave, scarfing, packing, fitting and lashing a rim.

Mini Bonus W 3" L 21/4 H 41/4"  
All Levels \$34



THMB07 Thursday 3 pm-5 pm

### Dragonfly

Karen Kotecki

Dragonfly is just so intriguing, you'll want to create a garden full of dragonflies. This brightly-colored insect is created with beads, reed, waxed cord, and wire. Materials for 4 dragonflies included in kit. One will be completed in class. Please bring your nylon jaw pliers if you have them.

Mini Bonus W 5" Wingspan L 4  
All Levels \$35



TH412 Thursday 3 pm-8 pm

### Sea Dreams

Jenny Elzy

This cat head base is woven with a continuous weave single twill. The rim of the bowl is a simple match stick border.

4 Hours H 4" D 10"  
All Levels \$25



**TH419**                      **Thursday 1 pm-5 pm**

**Turtle Wall Art**  
**Karen Garren/Lisa Sowers**

This eye catching dimensional turtle is designed using a hand-made pottery center and coiling glycerin prepared long leaf pine needles and sweet grass. Student will learn pine needle basketry basics including the basic stitch, wheat stitch and how to add the legs, head & tail. Great class for those new to coiling. This will be a treasure for your basket collection! Small scissors are the only tool needed.

4 Hours                      L 9" H 2" D 6"  
**All Levels**                      **\$55**



**TH420**                      **Thursday 6 pm-10 pm**

**Daisy Bowl**  
**Karen Garren/Lisa Sowers**

Learn to coil a pine needle rim with a twist on a lovely hand thrown pottery bowl. Five daisies surround the bowl which is finished with a soft green glaze. The basic stitch using waxed linen thread will be taught as well as other pine needle coiling techniques! A great class for those who are new to coiling.

4 Hours                      H 5" D 6"  
**All Levels**                      **\$60**



**TH426**                      **Thursday 3 pm-8 pm**

**Zen Again**  
**Gail Hutchinson**

Learn to create the "Zen" look. Learn spoke placement, three rod-wale with a step-up, a chase weave, and a unique rim with a keeper. You can either choose a bead that I have drawn on or you can draw on your own to finish this look.

4 Hours                      H 8" D 5"  
**Int/Adv**                      **\$49**



**TH439**                      **Thursday 6 pm-10 pm**

**Pouch**  
**Karen Kotecki**

Pouch is a wall basket woven with paper painted a different color on each side for dramatic weaving effect. The serrated rim is folded so that the inside color comes to the outside. Learn to lay out the narrow base to set up for the diagonal weaving. Circle the basket with a unique braid woven with a single strand of paper. Add a jute hanger.

4 Hours                      W 5" H 7"  
**Advanced**                      **\$45**



**TH451**                      **Thursday 4 pm-9 pm**

**Tree of Life**  
**Bonnie Rideout**

This basket is an exercise in triple twining. Instead of using 3 pieces of round reed we use 6. It adds a nice texture to your basket. Other techniques include filling a base, twining, triple twining with a step up and "stack weaving". The pretty Tree of Life embellishment completes this basket.

4 Hours                      W 5 1/2" L 6 1/2" H 5 1/2"  
**Beginner**                      **\$28**



**TH463**                      **Thursday 4 pm-9 pm**

**Stamped Woven Vessel**  
**Debbie Wilson**

Basket woven on gourd that is prepared, cleaned, drilled, spokes inserted, ready for weaving with sisal, jute, round reed and thread. Students will get to try their hand at stamp printing with permanent inks in three natural tones that work well with the weaving patterns, of twining and triple twine. A double woven border completes this vessel. An apron, vinyl gloves need to be brought by students if you have allergies.

4 Hours                      W 8" L 8" H 7" D 9"  
**Beg/Int**                      **\$45**





TH447



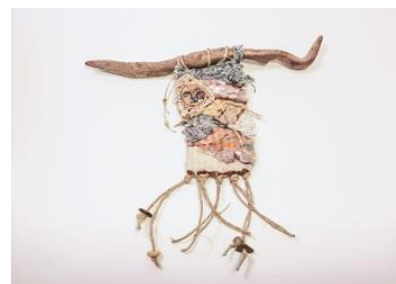
Thursday 4 pm-9 pm

### Blessings Marilyn Parr

You will start out with a weaver-ready base, which means spokes will be glued in. As you weave, you will be paying close attention to the shape as this basket tapers in as it goes up. The handle is very basic but a cute touch to a simple basket. Students will have a choice between the two-leather tie-ons — "family" or "simply blessed".

4 Hours  
Intermediate

W 5" L 9" H 8 1/2"  
\$47



TH468

Thursday 4 pm-9 pm

### Moonscape Tapestry Pamela Zimmerman

Weave your own personal moonscape tapestry to hang on the wall. Make it as surreal as you desire! Use bright or muted colors, learn to make hills and define them. A plethora of recycled and new fibers are provided, but bring your own, if you like! Hang from driftwood, or beautiful creamy peeled branch. Finish with Pamela's unique handmade moon charms. May want light/magnifier.

4 Hours  
Beginner

4" W L3" Total 9"x9" with  
fringe and stick \$58



TH603

Thursday 3 pm-10 pm

### Nantucket Muffin Basket Jan Beyma

Students will learn the basics of setting up and weaving a Nantucket basket. Stakes and weavers are cane. Basket is woven over a plastic mold for class use. The base and cheater rim are cherry and will be pre-finished. A tool kit will be provided for class use.

6 Hours  
Beg/Int

H 3" D 9"  
\$65



TH601

Thursday 3 pm-10 pm

### Betty's Buffet Peggy Adelman

Betty's Buffet starts with an 8"x12" maple racetrack shaped base. This basket offers two different weaving options. It can be woven as a twill or basic over one, under one. This will be the student's choice at the time of the class. The handles are rosewood handles and are set on the rim. Color options will be available.

6 Hours  
All Levels

W 11" L 18" H 6"  
\$65



TH607

Thursday 3 pm-10 pm

### Woven Star Basket Ann Bowers

Learn how to weave the classic star basket - using colorful overlays and rim filler. The basket sits on 6 points and rounds out as the sides are woven. Rim is lashed with cane. Let Anne help you take the mystery out of this base.

6 Hours  
Intermediate

H 3 1/2" D 11"  
\$65



**TH616**      **Thursday 3 pm-10 pm**

**Colorful Willow Zig Zag**  
**Bonnie Gail**

This round buff willow basket incorporates beautiful Procion dyed willow, which Bonnie dyed specifically for this class. A slath is made and the base is woven in pairing weave. Staking up is followed by zig zag siding woven in two colors. Top waling and a double border finish the basket. Fun!!

6 Hours      H 4" D 10"  
**All Levels**      **\$85**



**TH621**      **Thursday 3 pm-10 pm**

**Wave Tote**  
**Debbie Hurd**

Woven on an oval hardwood ash base with 2 button swing handles. Techniques include lots of triple twining and the wave weave design in the middle. Color choices available at class time.

6 Hours      W 8" L 12" H 9"  
**Int/Adv**      **\$64**



**TH625**      **Thursday 3 pm-10 pm**

**Carousel**  
**Candace Katz**

Starting with slotted bases, students will insert flat reed spokes and weave a twill pattern of 1-2 using 2 pieces of round reed as one weaver. Maple strips will be used to create the arrow embellishment. Stacked rim and lashed with wax linen thread. Lots of color choices of dyed maple will be available for the students to select from.

6 Hours      H 6 1/2" D 8"  
**Intermediate**      **\$60**



**TH608**      **Thursday 3 pm-10 pm**

**Deanna's Tote**  
**Char Ciammaichella**

This is a great sized tote. Students begin the tote by inserting natural spokes into a wood base. Techniques include 3 rod twining, 4 rod twining using several colors and start/stop weaving. Shaping will be a challenge as the sides are to be woven straight up. Snap on/off leather handles are added when lashing the rim.

6 Hours      W 9" L 13" H 9 1/2"  
**Intermediate**      **\$75**



**TH611**      **Thursday 3 pm-10 pm**

**Recycle and Be**  
**Groovy Chair**  
**Tonya Cubeta**

This chair is environmentally friendly using recycled materials. You will learn how to attach the recycled cotton material to weave the seat. The seat is woven in a herringbone pattern. The material will be multi-colored. This is a different and groovy way to use recycled materials and end up with a beautiful chair. The chairs are vintage finds and may vary in style.

6 Hours      34" to top 17" to seat 13"x16"  
**All Levels**      **\$95**



**TH613**      **Thursday 3 pm-10 pm**

**On the Fence Cathead**  
**Pati English**

Traditional woven cathead with dyed and natural spokes. Learn hand and finger placement, with emphasis on detail and shaping to a 9" diameter with flat oval Start/Stop weavers. Triple rows of Double Three-Rod Wale in navy/natural round reed highlight the horizontal weavers with specific color placement, inspired by our country fence. Other colors available. Finish with Cable Stitch border, rim filler, and notched handle.

6 Hours      H 6 1/2" 11" w/Handle D 9"  
**Intermediate**      **\$79**



TH627 Thursday 3 pm-10 pm

### Fiber Splint Lidded Basket Carolyn Kemp

Weaving with a new material, Fiber Splint, a flat 1/2" material that weaves dry, no water. Flexibility and strength are key features along with a unique natural color. The basket and lid are both woven with a diagonal weave and fit together snugly. The lid is topped with a folded pull from the same material. Standard basket tools required, but no water bucket needed.

6 Hours 4" Base H 7"  
Int/Adv \$45



TH628 Thursday 3 pm-10 pm

### Little Bit of Leather and Lace Julie Kleinrath

Woven on an oval wood base with a lot of triple twining. A band of chain waling woven with leather lacing surrounds a cherry stencil strip. A notched wooden handle is added to the basket and it is lashed with leather lacing with a string of pearls added as the rim filler. A strip of lace is added to the cherry stencil strip.

6 Hours W 5" L 8" H 4"  
Beg/Int \$55



TH631 Thursday 3 pm-10 pm

### Lattice Market Sharon Klusmann

This striking basket features the fancy lattice weaving in the center of the color using bleached Hamburg cane. It has a woven filled base using natural and colored spokes. The side weaving is all start/stop with a traditional rim. Available in a variety of colors.

6 Hours W 10" L 20" H/handle 14"  
All Levels \$65



TH637 Thursday 3 pm-10 pm

### Gathering Rainbows Eileen La Porte

This colorful basket has a twined and woven base. The sides of the basket are woven in start-stop weave, triple weave and decorative French randing. The handle is a rectangle hoop which is also a spoke. It is finished off with a sturdy rim of half round. Assorted color choices will be offered.

6 Hours H 5 1/2" D 12"  
Intermediate \$60



TH641 Thursday 3 pm-10 pm

### Fudge Stripe Mary and Jimmie Earl McKinzie

This small market basket with a solid woven base is handy for collecting and carrying small items. Placement of natural and smoked spokes adds visual interest to the base and sides. Black round reed woven with the smoked flat oval gives a dramatic effect. The wrapped handle is the perfect finishing touch.

6 Hours W 6" L 11" H 8"  
Beg/Int \$45



TH644 Thursday 3 pm-10 pm

### I Heart Baskets Name Tag Holder Barb McNally

The I Hearts Basket nametag holder has a beaded strip made in even count peyote stitch, using 11/0 Japanese delica beads. Strap will be glued to name tag holder upon completion. A beading project for all levels. Name badge holder included.

6 Hours W 3/4" L 4"  
All Levels \$35





**TH647**      **Thursday 3 pm-10 pm**

**Liberty Basket**  
**Becki Newsome**

Woven on a slotted, wooden base over a class mold. How to add a false rim is taught. The basket has 20" leather handles. Choice available: Patriotic colors with flag style star or smoked reed with a rusty star. Both embellishment styles will be available to choose from at the time of class.

6 Hours      H 12" D 12 1/2"  
**All Levels**      **\$65**



**TH648**      **Thursday 3 pm-10 pm**

**Yarn**  
**Billy Owens**

The Yarn is made of hand split white oak trees I select, cut and prepare by hand using homemade/primitive tools my Dad made and used. It has a woven "Working" bottom, 2 loop handles and is woven on a mold. I will share all things concerning the Ozark method of basketry. Everyone should finish in class.

6 Hours      H 8 1/2" D 12"  
**All Levels**      **\$75**



**TH653**      **Thursday 3 pm-10 pm**

**Rejuvenation**  
**Linda Scherz**

This little pouch necklace is fun to weave in a random pattern or create a scene. Students will have a variety of colors and materials to choose from. Twine, reverse twine, increase, embellish and make it yours. Give your pouch two different looks with different patterns on each side. The rim is a simple braided rim with fringe on the outside. Complete with a cotton cord neck cord.

6 Hours      W 1 1/2" L 2 1/4" H 1 3/4"  
**All Levels**      **\$32**



**TH656**      **Thursday 3 pm-10 pm**

**Danny's Rubbish**  
**Elaine Sinclair**

This is wonderful addition to your kitchen. Several hours went into constructing this rubbish container with a swing lid. 3 garbage cans will be shared in class to get that perfect fit or student may contact teacher to get particulars to purchase their own. Very nice wood base is 12"L x 9"W.

6 Hours      W 9 1/2" L 17" H 24 w/o lid  
**Advanced**      **\$97**



**TH658**      **Thursday 3 pm-10 pm**

**Square Feet**  
**Selena Straughn**

Woven base with fillers. Focus on keeping it while weaving start/stop rows. Add some 4 rod wale (2/2), a wide strip and over lays. The rim is traditional rim with a double X lashing. The wrapped X's created in the middle of each side make it stand out. Insert wooden feet and you have a useful chair side basket. Color selection will be available.

6 Hours      W 12" L 12" H 8"  
**All Levels**      **\$40**



**TH662**      **Thursday 3 pm-10 pm**

**Midnight Sapphire**  
**Kathy Taylor**

This basket is in our newest line of colored baskets. Made on a mold of hand pounded black ash with dyed ash accents. Completed with a single slotted birch rim and a colored base plate. Adds color to any room.

6 Hours      W 6" L 9" H 2 3/4"  
**All Levels**      **\$70**



TH667 Thursday 3 pm-10 pm

### Spring in Bloom Judy Wobbleton

Woven on a wooden base, Spring in Bloom features purple and natural reed stakes. Weaving with 1/4" flat oval reed, students will concentrate to obtain a round shape. A maple sponge painted strip will be provided. Students will twine with round reed to accent the maple strip. This sturdy basket is finished with an oak handle.

6 Hours H 14" w/ handles D 11 1/2"  
Beg/Int **\$64**



TH846



Thursday 1pm – 10 pm

### Woven Journals Jean Reed

Journals are unique, personal and mystical. Using strips of paper, in various colors and patterns, you will weave your journal covers and adhere them to chip board. Once completed, you will make signatures (page inserts) and embellish them. Students are urged to bring ribbons, family photos, buttons, beads, etc. to embellish their journal. Please bring a straight edge, hole punch and cutting mat and tiny scissors.

8 Hours  
All Levels

W 5" L 6"  
**\$85**



TH810 Thursday 1 pm-10 pm

### Hearth N' Home Penny Burchfield

Basket is woven on a D-handle with a filled base. Dyed maple strip will be accented with smocking technique and triple twining. Student learns how to taper spokes and lash rim to mimic smocking. Included is a handmade 4" quilt block. Student may not finish rim in class but will have written instructions and live tutorial to complete. Quilt block & color choices available in class.

8 Hours W 8" L 12" H 13" w/o handle  
Int/Adv **\$65**



TH860 Thursday 1 pm-10 pm

### Nantucket Square Market Basket

Charlene and Bill White

Nantucket Square Market Basket is made with hardwood staves. It has cherry bases, wide rims and two squared swing handles. The hands are secured with brass screws and large shell beads. This basket is a large, squared market style basket that will be great for shopping or storing your special items. Basket will be pre-started for students. Mold is included with class.

8 Hours W 10" L 10" H 7 1/4"  
All Levels **\$149**



TH866 Thursday 1 pm-10 pm

### Diamonds and Arrows Mat Laura Lee Zanger

This mat is made using the 4-1 twill technique of the Chitimacha. The diamonds and arrows stand out in color, but it also has natural God's Eyes in each corner. The perimeter is twined with waxed linen to secure your weaving. The fringe is cut with a rotary blade. This mat is a masterpiece that would be make a lovely centerpiece for your table or it could be framed and hung on the wall.

8 Hours W 18" L 18"  
Advanced **\$85**





**TH871**      **Thursday 1 pm-10 pm**

### **Driftwood Treasures** **Judy Zugish**

Recent New Zealand travels reignited a special connection to driftwoods. You can bring one or select from my stash. Enjoy the pleasure of weaving with willow barks and cedar prepared for this creative beach piece. Learn a lovely twill base, twining skills, weave patterns, and creative border choices. (From recent travels, experimenting with coloring willow barks means we can explore that in this fun class).

8 Hours      W 5" H 5"  
**Intermediate**      **\$65**



**FR452**      **Friday 1 pm-5 pm**

### **Sangria** **Bonnie Rideout**

This pretty basket is woven with the accent colors of wine and moss green. The triple twill includes smoked reed. Techniques include a filled base, twining, triple twining with a step up, inserting a swing handle and "lashing" with homespun fabric. The pretty berries complement the colors of the basket. Sure, to become a favorite.

4 Hours      6 3/4" H 6" L 11"  
**Beginner**      **\$35**



**FR464**      **Friday 8 am-12 noon**

### **Peppermint Twist** **Judy Wobbleton**

Students will start with a wooden slotted base, using my techniques for securing stakes. Basket features a continuous twill. Twining off sets a natural strip. Basket is finished with an oak handle. This easy twill is perfect for a student's first twill experience.

4 Hours      H 12 1/2" D 8 1/2"  
**Beg/Int**      **\$50**



**FR466**      **Friday 1 pm-5 pm**

### **Piccadilly** **Judy Wobbleton**

Woven with reed this functional sturdy basket features French Randing. This basket is ideal for the student who would like to learn the French Randing technique. An arrow design created with round reed compliments the Randing design. Shaping will be emphasized. Basket is finished with wooden feet and wooden handles.

4 Hours      H 14" w/handles D 9 1/2"  
**Beg/Int**      **\$53**



**FR610**      **Friday 9 am- 4 pm**

### **Light the Way** **Tonya Cubeta**

This lighthouse is woven around an unusual mold. It is woven with Hamburg cane and flat reed. The lighthouse is solar, so if put in the sun it will light up. Add your own touches to make it unique. The color will be black and natural.

6 Hours      W 3 1/4" H 13" D 3 1/4"  
**All Levels**      **\$70**



**FR618**      **Friday 9 am-4 pm**

### **Rolling Waves** **Bonnie Gale**

This basket is named due to the rolling wave nature of the border. It is made in small buff willow. A 5.5-inch round base is woven and double staked with thin 3-foot willows. Bottom waling is followed by a set of French randing weavers. Top waling is added prior to a lovely rolled border which is elevated on two sides, giving raised handles.

6 Hours      W 10" L 11" H 5"  
**All Levels**      **\$78**



FR622

Friday 9 am – 4 pm

**Kennedy**  
**Debbie Hurd**

This basket is woven on a painted/sealed black oval base. All weaving material are shades of black and grays for a wonderful contrast. Techniques used are: 4-rod wale, 2/1 continuous twill, cross-stitch and double lashed rim. A choice of embellishment at class time.

6 Hours  
**Intermediate**

W 7" L 11" H 5 1/2"  
**\$55**



FR626

Friday 9 am – 4 pm

**Acorn Basket**  
**Carolyn Kemp**

Students will weave this small acorn shaped basket with a "cap" using brown ash stakes, raffia weavers, waxed thread, reed and sweetgrass. Perfect to hang on the Christmas tree or add to your miniature collection of baskets. Standard basket tools are required with small clips, small water container and small packer or awl.

6 Hours  
**Int/Adv**

W 2" L 2" H 3"  
**\$55**



FR629

Friday 9am – 4 pm

**Twisted Spiral**  
**Julie Kleinrath**

Woven on a wood base over a mold included with the class. Woven in round reed, adding a band of space dyed reed as you weave. Finally, the basket is finished with a full matchstick rim. Many color choices for the space dyed reed will be available to choose from.

6 Hours  
**Beg/Int**

H 4" D 5"  
**\$50**



FR636

Friday 9 am -4 pm

**Country Fruit**  
**Eileen La Porte**

Shaping is stressed to create a flat bottom round basket and achieve a great form. Finish with two side wrapped handles and a sturdy rim of half round. You can choose to weave this classic basket in natural or I will have some dyed weavers if you should choose to add some color.

6 Hours  
**Beg/Int**

H 4" D 13"  
**\$50**



FR645

Friday 9 pm – 4 pm

**I Love Rib Baskets Bracelet**  
**Barb McNally**

Show your love of rib baskets on your wrist. The I Love Rib Baskets bracelet is done in 11/0 Japanese delica beads in even count peyote stitch and finished with crimp bars and silver clasp. Different background colors will be available.

6 Hours  
**All Levels**

W 3/4" L 7"  
**\$34**



FR649

Friday 9 pm-4 pm

**Small Williamsburg**  
**Billy Owens**

The Small Williamsburg is made of hand split white oak trees I select, cut and prepare by hand using homemade/primitive tools my Dad made and used. It has a woven "Herringbone" bottom, a round top that is woven on a mold with a solid handle. I will share all things concerning the Ozark method of basketry. Everyone should finish in class.

6 Hours  
**All Levels**

W 8" L 8" H 8 1/2" D 12"  
**\$75**



FR659

Friday 9 am-4 pm

### Lavender Fields Selena Straughn

Lavender will be hand painted (by fellow weaver) on a 12" EZ D Handle. Create woven bottom adding diagonal pieces. Basic start/stop rows, add in a purple braid and paired triple twine rows. Add some purple wraps for accent. Bring the lavender color to the top of the handle with a simple handle wrap. Tie on some dried lavender and enjoy.

6 Hours

W 12 1/2" L 14" 12" w/ handle 5" w/o  
\$48

Intermediate



FR654

Friday 9 am-4 pm

### Celebration Linda Scherz

Students will have a base with spokes glued in to start. Quad twine with four colors of cotton cord in a stacking pattern. Newer weavers regular twine and experienced weavers an arrow pattern. Complete with a traditional rim, braid cord for rim filler, and lash with cord or a folded rim made with the spokes. Weave with colors pictured or contact Linda to select colors.

6 Hours

H 3 1/4" D 5 1/4"

All levels

\$38



FR657

Friday 9 am-4 pm

### Oh! Christmas Tree Elaine Sinclair

A very lovely addition to your Christmas décor. Students will do twining, over/under weave while shaping the tree. Adding ribs will be taught. At base students will do a rewoven border with a ruffle. A strand of battery operated lights and star will be included.

6 Hours

H 18" D 26" bottom

Beg/Int

\$45



FR668

Friday 9 am-4 pm

### Heart Light Pamela Zimmerman

Great for a wedding or just fun décor, this heart has lights woven right in. We'll use both wicker and random weaving to make our heart shape. Clear or white light strands are used (photo taken with dark colored lights for contrast).

6 Hours

W 20" L 20" H 4"

Beg/Int

\$65



FR661

Friday 9 am-4 pm

### Cottage #5 Round Swing Eric Taylor

New this year is the beginning of The Cottage Round Swing Set. This is the five-inch size. Mold woven with hand pounded brown ash uprights and weavers. This basket is finished with a cherry swing handle and rims.

6 Hours

H 8" D 5"

Beg/Int

\$120





FR665

### Woven Tip Over Debbie Wilson

This basket is constructed on a gourd base that is cleaned, drilled, slotted and dyed. Flat spokes will be glued in ready to go. Featuring twining, 3 rod wale, 4 rod wale done with round reed on the base of the gourd. A border of round reed coiling holds the spokes that have been inserted back into the gourd. The coiling is overlaid with a slanted bend that enhances the tipped appearance.

6 Hours  
Int/Adv

Friday 9 am-4pm

W 7" L 7" H 7" D 7"  
\$50



FR805

Friday 8 am-5 pm

### Totally Twilled Tote Peggy Adelman

Totally Twilled Tote is woven using a 2x1 twill pattern to create the base as well as the sides. The color placement will be left up to the weaver. Shaping will be stressed. There are 30" leather handles attached at the rim. Color options will be available.

8 Hours  
All levels

W 8" L 16" H 11"  
\$65



FR807

Friday 8 am- 5 pm

### Large Nantucket Fruit Bowl Jan Beyma

Students will learn to start and finish a Nantucket basket by inserting the cane staves into the base. They will also learn to incorporate a twill pattern in the basket with cane weavers. Basket is woven over a large acrylic bowl mold. Mold is for class use only. Cherry base and cheater rim will be pre-finished. Tool kit will be provided for class use.

8 Hours  
Intermediate

H 6" D 9"  
\$85



FR809

Friday 8 am-5 pm

### Flat Bottom Egg Basket Ann Bowers

This uniquely shaped basket is a must for rib aficionados! Using a rectangular and a round hoop, students will use dyed, pre-shaped ribs to create this basket. Skills include weaving an 'ear', placing primary and secondary ribs and making a neat decrease. All students may not complete in class but will learn what they need to complete at home. \* Bring sharpened knife to class.

8 Hours  
Advanced

W 15" H 13" D 8"  
\$100



FR811

Friday 8 am-5 pm

### Water Colors Penny Burchfield

Perfect for storing small projects, this basket is woven on a round slotted base using space-dyed and natural reeds. In class, you will be chasing, twilling, twining, and smocking. I space-dye all reed to match handmade beautiful batik basket liners. Various prints/colors available in class. Student may contact teacher with color preference.

8 Hours  
Intermediate

H 8" w/o handle D 14"  
\$65



FR812 Friday 8 am-5 pm

### Naturally Textured Char Ciammaichella

Basket begins by inserting all-natural spokes into a wood base. Weaving techniques include a start/stop twill weave using a graph, a 2/1 continuous twill using round reed, start/stop weaving and 3 rod twining. This is a great techniques basket! You will make your own handle as part of the basket. Using all-natural reed with different weaves gives this basket the great textured look.

8 Hours W 9" L 13" H 9 1/2"  
**Intermediate \$99**



FR814 Friday 8 am -5 pm

### Vieve's Bowl Jenny Elzy

Woven on a wooden pedestal base and is pre-started. Weaving will consist of a twill pattern, triple twining, continuous chase weave, and a braided border. Lots to learn in this one basket. This basket is prestarted.

8 Hours H 7" D 13"  
**Beg/Int \$57**



FR817 Friday 8 am-5 pm

### Diamonds on Maple Pati English

Start this medium sized basket with a racetrack wood base, Pati's way to secure vertical overlays at the base, and Double Three-Rod Wale borders on the 1 1/2" wide dyed maple strip. Learn how to secure maple with a modified cross stitch creating "Diamonds on Maple". Finish with dyed Rim Filler, Cable Stitch Border, and Double Strand Braid Handle Wrap to complement the maple strip.

8 Hours W 8" L 12" H 6" 12" w/  
**Intermediate Handle \$89**



FR819 Friday 8 am-5 pm

### The Sister's Vase Kathy Garren/Lisa Sower

"Bead" dazzle this lovely scooped front pottery vase with a pine needle rim, colored waxed line thread, and fancy beads. Learn how to shape a pine needle rim/basket, and how to add beads between rows. Vase can be used for dried flowers, utensils or just to admire. Only tool needed is small scissors.

8 Hours H 7 1/2" D 7"  
**Int/Adv \$80**



FR823 Friday 8 am-5 pm

### Debbie's Double Diamond Gail Hutchinson

This wooden bottom basket is full of color. Learn three rod-wale with a step-up, and a 1-2 twill. Add a false rim and two kinds of diamonds to complete this basket. There will be several color choices. This is a very strong sturdy basket.

8 Hours H 6 1/2" D 13"  
**Int/Adv \$65**



FR825 Friday 8 am-5 pm

### Ming Candace Katz

To weave this basket, the focus will be on shaping and manipulation of weaving materials. Color overlays are used to create the design. The basket will be finished with a double rim and lashed with waxed linen thread.

Color choices will be available.

8 Hours H 9" D 10"  
**Int/Adv \$55**



FR835

Friday 8 am – 5 pm

### Quilted Karen Kotecki

This intriguing basket starts on a wood base with a narrow slot. The spokes will be inserted. Continuous weave creates the quilted stacks of diamonds. Attention to tension, counting, graph reading, and shaping are essential. Spokes are glued to the rim row and lashed with poly cord.

8 Hours  
Advanced

H 6 1/2" D 11"  
\$85



FR829

Friday 8 am-5 pm

### Magnificent Mahogany Sharon Klusmann

This rich looking basket begins with a rectangular wooden base. The two main techniques taught are triple twining and continuous cross-stitching. Shaping is emphasized and you will rim with a V technique using waxed linen and adding black leather handles.

8 Hours  
Intermediate

W 9"L 10"H/handles 9 1/2"  
\$85



FR838

Friday 8 am-5 pm

### River Canyon Mary and Jimmie Earl McKinzie

This large robust basket has a filled base and features sides woven with natural reed and a twill pattern of dyed weavers framed by triple twining. The basket is finished with overlays and two swing flat top push-in handles. The end result is a striking and useful basket.

8 Hours  
Intermediate

W 11" L 20" H 18"  
\$95



FR841

Friday 8 am-5 pm

### Simply Williamsburg Becki Newsome

Woven on a solid base. Start/stop weaving is used, with ends of the basket being stacked to give the basket its shape. Triple twining gives the basket some accent color. Choice of color combinations. The rim is woven in the Gretchen style. Enough time is allowed in class for everyone to complete the rim. It is a very simple weave that just looks difficult.

8 Hours  
Int/Adv

W 12 1/2" L 17" H 13"  
\$68



FR843

Friday 8 am-5 pm

### Let Arrows Fly Marilyn Parr

Your oval wooden base will be weaver-ready with the spokes glued in. The theme of "Arrows" is carried throughout the basket with arrow triple twine, arrow twill, and even the lacing on the English braided handle is in an arrow design. Color choices will be available.

8 Hours  
Int/Adv

W 10" L 16 1/2" H 12"  
\$98





FR847

Friday 8 am – 5 pm

### Pottery Baskets with Distinction

**Jean Reed**

Exquisite hand thrown pottery bowls act as the base for creative and free form weaving. Using dyed and natural reed, and fibers, you will construct your basket with twining and tapestry techniques. Rims will be discussed. Some embellishments will be available. Students are urged to bring feathers, beads, buttons, and other items along to personalize your basket. No two pieces of pottery are alike and all are unique.

8 Hours  
All Levels

W 4" L 6" H 8" D 5"  
\$85



FR855

Friday 8 am-5 pm

### Reproduction Shaker Bureau Basket

**Kathy Taylor**

This is a reproduction of a Shaker fancy basket. All materials have been prepared in the time-honored fashion of the Shakers. It is made all in hand pounded black ash on a mold as were the originals. Keeping the Shaker history alive.

8 Hours  
Intermediate

W 5" L 7 1/2" H 7 3/4"  
\$65



FR859

Friday 8 am-5 pm

### Nantucket Heart Carrier

**Charlene and Bill White**

Nantucket Heart Carrier has cherry base, wide rims and heart divider. Hardwood staves woven with cane in the traditional Nantucket way. This basket can be used for all your needlework needs. It is a large basket for large storage needs. It will be great for needlework of all kinds. Basket will be pre-started for students. Mold is included with class fee. Heart divider included in class.

8 Hours W 8 1/2" L 15 1/2" H 6 3/4"  
All levels \$149



FR872

Friday 8 am-5 pm

### Teresa's Purse

**Judy Zugish**

A charming granddaughter inspired this purse, and now the design is perfect for cell phones and weaving to live side by side! In this intermediate class we will have cedar barks and willow prepared for individual design choices. Bring your own favorite buttons or beads to personalize. Learn some marvelous management of soft barks and shaping. Discover a great strong folded border and use cordage of your choice to slip this beauty into a wearable working piece.

8 Hours W 5" H 7"  
Intermediate \$65



### Helpful hints:

Wear comfortable clothes.

Make sure you have all the tools you need (contact teacher beforehand if needed).

Drink water..... stay hydrated.

Be considerate.

Be on time to class so as not to disturb others.

Don't carry on conversations with others outside of the class.



FR865



Friday 8am – 5 pm

### Double Wall Feather Basket Laura Lee Zanger

The components help in its shaping. The first wall goes straight up. The stakes are then inserted through the weaving to help shape the roll of the top of the basket for the serpentine section. Re-positioned stakes against the base aid in the weaving of the outside wall as it brings the shape of the basket inward back to the base. Finish with inserted colorful feather pieces. There are eight colors for the reed feathers.

8 Hours  
Int/Adv

H 10" D 10"  
\$100

### New Happenings in 2019:

\* No extra hour fees.... Take as many hours as you want

\* Teacher Marketplace is at 7:30 pm-9:30 pm

\* Basket Swap is at 7:00pm

\* You can come and weave for only one day Friday or Saturday. Pay \$25 + open class fee (goodie bag not included) and you DONOT need to be a member of NCBA.

So, encourage other members of your guild to come, weave a basket and see how wonderful NCBA can be.



SA403 Saturday 8 am -12 Noon

### Nantucket Sugar Bowl Jan Beyma

Students will learn the basics of setting up and finishing a Nantucket basket. The basket will be woven over a ceramic bowl which becomes part of the basket. They will insert the cane staves into the base and weave with cane in an over under pattern. Cherry base, lid and cheater rim will be pre-finished. Tool kit will be provided for class use.

4 Hours  
Beg/Int H 5" D 5 1/2" \$65



SA404 Saturday 1 pm - 5 pm

### Nantucket Pedestal Bowl Jan Beyma

Students will insert the cane staves into the base and weave with cane in an over under pattern over under pattern. The basket is woven over a plastic bowl provided for the class use. Cherry pedestal base and cheater rim with be pre-finished. Tool kit will be provided for class use.

4 Hours  
Beg/Int H 3 1/2" D 5 1/2" \$55



SA432 Saturday 8 am – 12 Noon

### Swirl Flower Bucket Julie Kleinrath

Woven on a wood base over a mold included with the class. This is a continuous weave basket that is woven with 3mm flat/oval and cotton cording. Woven in an intricate design that turns out beautiful every time. The basket is finished with a pottery swing handle and a waxed linen lashing.

4 Hours  
Beg/Int H 6" D 5" \$50



SA431 Saturday 1 pm – 5 pm

### Dad's Magazine Julie Kleinrath

Woven on an oval wood base, in natural, smoked, and black reed. The design is woven in a beautiful twill pattern alternating colors to achieve the design. The basket is finished with black leather handles and a waxed linen lashing. Shaping will be featured for this basket. Finally, the basket is finished with an embellishment designed and made by the instructor.

4 Hours W 7" L 14" H 10"  
**Beg/Int \$55**



SA450 Saturday 12noon - 5 pm

### Let Freedom Ring Bonnie Rideout

This is a fun basket to weave for any weaving level! If you are not familiar with Quick Weave handles you will love it! This patriotic basket is woven with dyed reed and sea grass. The Let Freedom Ring embellishment and pretty pip berries complete the look.

4 Hours W 14" H 20"  
**Beginner \$48**



SA606 Saturday 9 am – 4 pm

### Stepping Up a New Way Ann Bowers

A square ribbed basket that utilizes pre-shaped ribs and offers color choices for the student. Students will learn a great handle embellishment, how to weave a god's eye, whittling and inserting ribs, and weaving with cane and reed.

6 Hours W 6" L 6"  
**Intermediate \$50**



SA609 Saturday 9 am -4 pm

### Bird House Basket Tonya Cubeta

This bird house is woven in two steps. The bottom will be woven using a round wooden base and finished with banding and lashing. The top will be woven using a pre-drilled gourd with a Gretchen border. Then we will put both pieces together and add embellishments. Each will be slightly different due to the shape of the gourd top.

6 Hours W 5" H 10" D 4"  
**All Levels \$65**



SA620 Saturday 9 am- 4pm

### Easton Debbie Hurd

Easton is woven on a hardwood ash base and has black leather handles. Techniques include: 4-rod wale, adding overlays, continuous weaving with a lazy stitch, triple twine arrows and double lashing. An embellishment is added to the side last.

6 Hours W 6" L 11" H 6"  
**Intermediate \$51**



SA624 Saturday 9 am - 4 pm

### Small Potato Basket Gail Hutchinson

This little ribbed basket is fun to make. Learn how to measure ribs and when to do turn backs. Choice of blue, teal, or natural weavers.

6 Hours H 3 1/2" w/o handle D 6"  
**Int/Adv \$50**





SA646 Saturday 9 am-4 pm

### Six to One Bracelet Barb McNally

Six to One, half a dozen to another. Six different baskets in one bracelet. Using 11/0 Japanese delica beads in an even peyote stitch. The bracelet will be finished with silver crimp bars and a silver clasp. A good project for beginners and veterans alike.

6 Hours W 3/4" L 6-7"  
All Levels \$34



SA664 Saturday 9 am- 4 pm

### Black and White Debbie Wilson

Basket constructed on a black dyed gourd that has been prepared with drilled holes for spokes. Spiral slewing weave surrounds the walls of the gourd and then the stakes go through the gourd to form inner stakes that are twined and triple twined. The whole design is done in round reed, black and white, and finished off with a double woven border.

6 Hours W 7" L 7" H 7" D 8-9"  
Intermediate \$50



SA813 Saturday 8 am-5 pm

### Bargello in the Round Char Ciammaichella

Students begin by inserting spokes into a round wood base. Techniques taught will include 3 rod arrow with a step up to be woven several times, regular 3 rod twining and start/stop weaving. The challenge to this basket is keeping it nicely rounded. Many color choices will be available.

8 Hours H 6 1/2" w/ D Handle 10"  
Intermediate \$69



SA801 Saturday 8 am -5 pm

### Braided Plaid Peggy Adelman

Braided Plaid starts with an oak Williamsburg handle. The bottom consists of dyed stakes and natural fillers. The sides are woven with dyed, natural and smoked reed. Shaping will be stressed. The rim is a double braided border. This is a fun basket. Color options will be available.

8 Hours W 11 1/2" L 15" H 9 1/4"  
All Levels \$60



SA854 Saturday 8 am- 5pm

### Brown Ash Quiver Eric Taylor

This quiver is made from hand pounded Brown Ash. Tapered uprights are woven into a round bottom and formed over a mold. Finished with thick Brown Ash splint rims and custom leather straps.

8 Hours L 20" D 2 1/2"  
Beg/Int \$135



SA816 Saturday 8 am-5 pm

### Carlie's Baby Toy and Laundry Basket Pati English

Start with an 8" or 12" square woven base watch it grow to 8" tall with a 12" opening, or 12" tall with 15" diameter. Weave in Five-Rod Wale, Outside Spiral near the rim or Five-Rod and Reverse Five-Rod Wale creating a wide center arrow. A great planter for houseplants in 5 reed colors. Includes pattern for both baskets. Indicate size on registration.

8 Hours W 9" L 9" H 13" D 15"  
Intermediate \$84



SA818 Saturday 8 am-5 pm

### Sky Bridge Bonnie Gale

This unique rectangular willow basket has a gathering of stakes up into a "bridge" which are woven from each side. Students are provided with a prepared frame base which is partially woven. Scalloped stakes are attached followed by bottom waling and siding of English slewing. Packing creates a dip in the long sides. Top waling is followed by rolled border and the magnificent bridge handle.

8 Hours W 6" L 10" H 17"  
Int/Adv **\$145**



SA821 Saturday 8 am - 5 pm

### Betty's Bowl Kathy Garren/Lisa Sower

Create a pine needle (glycerin prepared) rim with a handle on a unique oval shaped hand-thrown pottery bowl. Pottery is finished in a beautiful blue glaze. Take pine needle coiling to the next level by learning how to add walnuts and beads for embellishment and how to make a handle.

8 Hours H 8" w/Handle D7 1/2 x 5"  
Intermediate **\$70**



SA824 Saturday 8 am-5 pm

### Indian Summer II Candace Katz

This basket is woven on a slotted round base. Weave techniques include Japanese twill, triple twining, reverse triple twining, and a rim that incorporates Tri- twining with a unique ending. The Tri twining is done with a 2.75mm leather. Color choices will be black or brown.

8 Hours H 5" D 10"  
Intermediate **\$55**



SA827 Saturday 8 am-5 pm

### Tree of Life Sharon Klusmann

This practical and beautiful basket in natural and gray features a woven base, all start/stop weaving and fancy lattice overlay using bleached Hamburg cane. Learn to cap your seagrass filler with reed and outline your lasher with gray waxed linen. Lovely removable canvas inserts with gray trees and handles included.

8 Hours W 10" L 14" H 6"  
Intermediate **\$69**



SA826 Saturday 8 am - 5 pm

### Arrows Tote Carolyn Kemp

Students will weave this twill pattern in dyed reed with a solid twill bottom and double swing handles. The pattern is a variation of a Cherokee "arrows" design. It was taught in Fayetteville, NC at NCBA in 1996 by Louise Grubb, a wonderful teacher who is now sadly deceased. Carolyn's original basket has been her "go-to" tote for years. Standard basket tools are required.

8 Hours W 6" L 12" H 10"  
Intermediate **\$85**



SA832 Saturday 8 am-5 pm

### Hoopd Karen Kotecki

An X-design secures the base fillers of the pre-started base. The hoop is the outside rim and the ends are the handles. Learn to shape the basket to stay within the hoop parameters, weave with inserted oak feet, add auxiliary rims to the ends, and lash the hoop onto the basket.

8 Hours W9"L 15"21"w/ hoop H9"  
Intermediate **\$85**



SA852

### Josephine's Egg Elaine Sinclair

Saturday 8 am – 5 pm

Beautiful basket to learn my technique of doing the Josephine knot. Shaping will be discussed. Various colors will be provided. Main body woven with 3/16 flat oval for more stability.

8 Hours  
Intermediate

Free Form  
\$68



SA836

Saturday 8 am – 5 pm

### Tri-Twined Eileen LaPorte

The basket starts with on an oak base and is woven over a bowl. The sides of the basket are tri-twined with wax linen and reed. Follow the written pattern or have fun making this your own design by changing the color of your spokes, weavers or wax linen – make a different basket each time.

8 Hours  
Int/Adv

H 6" D 12"  
\$68



SA837

Saturday 8 am – 5 pm

### Zebra Mary and Jimmie Earl McKinzie

This black and natural basket features vertical stripes and a wood base. Attention to shaping provides the personal touch. Finish it with a dynamic two-tone Gretchen border, or a standard lashed rim.

8 Hours  
Intermediate

H 6" D 9"  
\$60



SA842

Saturday 8 am – 5 pm

### Oak Back Pack Billy Owens

My newest basket design the Oak Back Pack is made of hand split white oak trees I select, cut and prepare by hand using homemade/primitive tools my Dad made and used. It has a woven "Herringbone" bottom, an oval top and will be double lashed. It is finished with a beautiful functional leather harness. Everyone will finish in class.

8 Hours  
All Levels

W 6" L 10" H 12"  
\$130



SA848

Saturday 8 am – 5 pm

### Snowshoe Weaving Jean Reed

Although these snowshoes will look wonderful as a decoration on the wall of your home, they are also to be used. The technique has a series of knots and twists and it resembles the Shaker cheese pattern. Discussion will be about the finishing process with a poly and attaching harnesses. Harnesses are made specifically for this size snowshoe and are of fine leather.

8 Hours  
Int/Adv

W 8" L 24"  
\$150





SA849 Saturday 8 am – 5 pm

### Turquoise Wishes Linda Scherz

For students with waxed linen experience looking to work on weaving and shaping techniques. Base is twined with a bead foot. Sides are a combination of twining and quad twined arrows. Upper section is accented with delicate beads and the combination of 4 & 7 ply waxed linen. Rim is accented with beads. Instructor will demonstrate her techniques for working rows, color change, and shaping.

8 Hours H 1 1/2" 2 3/4"  
Int/Adv \$43



SA853 Saturday 8 am – 5 pm

### Home Town Selena Straughn

You want a basket with several techniques this is it. Start with slotted base add spokes, Triple Twine, Twill, Paired Triple Twine, basic start/stop, and 3 strand braid. Basic rim with leather handles. Couple color choices will be available. Basket is finished with leather handles.

8 Hours W 5' L 15" H 7" 12"  
Intermediate \$58



SA857 Saturday 8 am – 5 pm

### Simply Cape Cod Kathy Taylor

The basket is made on a mold with hand pounded black ash material. Accent woods are American Cherry. Students will learn how to setup of an oval basket. The basket is easily finished with a single slotted cherry rim. This basket is sought after by many of our basket customers for use as a tabletop basket.

8 Hours W 5 1/4" L 7 3/4" H 4 3/4"  
Intermediate \$95



SA844

### Off the Cuff Marilyn Parr

Saturday 8 am – 5 pm

A large basket that starts on a square wood base and ends up round. Spokes will be glued in and weaver ready. Variety of techniques: twine, triple twine, inserting overlays, stack-weaving, and shaping. Unique "cuff" leather handles that are inserted on the spokes are the best part! The "cuffs" will be available in several different colors.

8 Hours W 19" L 19" H 12"  
Int/Adv \$105



SA858 Saturday 8 am – 5 pm

### Nantucket Anniversary Basket Charlene and Bill White

Nantucket Anniversary Basket has hardwood staves, cherry base, wide rims and a divider. Basket is woven with cane in the traditional Nantucket way. This basket was designed and used for our 50th anniversary. It has a variety of uses but we placed mason jars in it with serving utensils. Basket will be pre-started for students. Mold is included in class fee.

8 Hours W 7" L 14" H 4 1/4"  
All Levels \$149



SA861 Saturday 8 am-5 pm

### Wheelie Cat Basket Judy Wobbleton

This basket is all about shaping and experiencing shapes unique to each weaver. Student will learn an easy technique in creating a cat head shape. Weaving includes the traditional over under technique, twining and accenting with color and embellishing with Cherokee Wheels. Basket is finished with wooden handle.

8 Hours H 18" w/Handles D 11 1/2"  
**Intermediate \$75**



SA864 Saturday 8 am – 5 pm

### Rainbow Kaleidoscope Laura Lee Zanger

Rainbow Kaleidoscope is made in primary and secondary colors which makes the 1-3-5 twill design stand out while the three widths of weavers give it some undulation. The base is a 3-3 herringbone twill.

8 Hours H 8" D 9"  
**Advanced \$90**



SA870 Saturday 8 am-5 pm

### Diagonals Judy Zugish

A new weaving pattern for experienced naturals enthusiasts. Diagonals uses finely prepared willow barks and a precise twining pattern that advances sideways. Care with your twining tension and good handling brings out a very polished result. Sometimes I make these very functional, sometimes very distorted. The versatility within the willow encourages experimentation.

8 Hours W 4" H 6"  
**Int/Adv \$65**



SA868 Saturday 8 am-5 pm

### Tranquil Pool Pamela Zimmerman

Coil glycerinated pine needles around one of Pamela's original handmade stoneware bases to make a unique basket. Each will have a beatific face, in a cobalt glass pool! Glass may have crazing and bubbles, it's all part of the look! Learn wheat stitch, fern stitch, couching. Add cobalt bead "water droplets" to end. Beginner students may choose to simplify design by eliminating floating coil ending.

8 Hours H 1" D 5"  
**All Levels \$70**



SUMB12 Sunday 8 am – 12 Noon

### Button Fun Mary and Jimmie Earl McKinzie

Weave a fun accent basket on a small Williamsburg handle and embellish it with a unique handmade button. Choice of reed colors and buttons will be available.

Mini Bonus W 1" L 6" H 6"  
**All Levels \$24**



SUMB13 Sunday 8 am – 12 Noon

### Small Gems Judy Zugish

A really fun intro class for all levels to the pleasures of willow bark for miniature pieces. We use small copper wire and open twining to expose the wrinkly aged character of the barks. A super folded border and finishing additions complete these giftable small gems.

Mini Bonus W 1" H 2"  
**All Levels \$25**



SU407 Sunday 8 am – 12 Noon

### Weaving with Silver: Parallel Char Ciammaichella

Students begin by learning the correct way to open and close jump rings seamlessly. Students then weave a bracelet in the parallel weave using sterling silver and copper jump rings. Two different sizes of jump rings are woven together to make this great looking open weave style bracelet. Earrings can also be woven.

4 Hours W 1/4" L 7 1/2"  
**Beg/Int \$80**



SU410 Sunday 8 am – 12 Noon

### Hanging Around Necklace Tonya Cubeta

This necklace is constructed using wax linen for the spokes and all the weaving. You will learn different weaves and a braided border. Beads will be used for embellishment. A mold will be included in the class fee. There will be choice of color.

4 Hours W 2" H 2"  
**All Levels \$45**



SU406 Sunday 8 am - 12 Noon

### Grab N' Go Tote Penny Burchfield

Woven on an oval slotted base, this simply sweet tote is perfect for carrying minimal essentials. Weaving is pretty straight forward here, although paying attention to shaping is important. You will have the option of weave pattern and lashing with fabric strips or flat oval reed. Various prints/colors of handles will be available in class.

4 Hours W 4" L 11" H 7"  
**All Levels \$35**



SU402 Sunday 8 am – 12 Noon

### Nantucket Vanity Jar Jan Bayma

Students will learn to start and finish a Nantucket basket by inserting the cane staves into the base. They will learn to incorporate a twill pattern using cane as the weaver in the basket. Basket is woven over a jar that will remain part of the basket. Cherry base, cheater rim and lid will be pre-finished. Tool kit will be provided for class use.

4 Hours H 4 1/2" D 3"  
**Intermediate \$65**



SU413 Sunday 8 am – 12 Noon

### Cell Pocket Jenny Elzy

Quick and easy. This is a continuous weave with a single twill. No need for a reed rim. Cloth will be attached around the top to remove the possibility of scratching the cell phone. Extra straps and embellishments will be available to exchange. Kits come in natural, teal, or smoked. Please state preference. If not stated the kit will be smoked.

4 Hours W 1" L 4" H 6"  
**All Levels \$20**



SU414 Sunday 8 am – 12 Noon

### Pick 2 Mini Baskets Pati English

Pick 2 from these 5 small baskets; great hostess gifts, candy baskets, party favors, and more. Learn a variety of flat oval and round reed techniques. Select from: Racetrack Spiral, Reverse Spiral Round Reed, Mini Round Twill, Mini Elbow/Heart Wall and Open Weave Garlic Baskets. Select two colors: wine, green, yellow, purple. Pick two, you win three more as all five patterns included.

4 Hours W 4" L 4 1/2" H 5" w/handle  
**Intermediate \$66**





SU416 Sunday 8 am – 12 Noon

### Polish Bread Basket Bonnie Gale

This basket is made in peeled willow and is based on the Polish Tatzca basket. It is useful on a table to hold bread. Six groups of rods are woven into a hexagon and then the rods are curved around and woven. The outside rod is in contrasting white peeled willow. Full colored photo directions in given pattern. It is a fun basket to weave!

4 Hours H 5" D 15"  
**All Levels \$68**



SU418 Sunday 8 am – 12 Noon

### Uniquely Yours Bracelets Kathy Garren/Lisa Sowers

Design and create your own pine needle bracelet for your wrist size and show off something you designed and created! You will learn the basic and wrapped stitch, how to use floral wire in a coil, and adding beads between rows. Students will have a choice of colored thread, and beads.

4 Hours L 6" H 1 1/2"  
**Beg/Int \$20**



SU424 Sunday 8 am – 12 Noon

### Irma Debbie Hurd

Irma is woven on an oval hardwood base. It has black as a primary color and a secondary color to complement. Techniques include: 4-rod wale, paired triple twining, twine with 2 different sizes and weaving stacked rows. A side embellishment is also included.

4 Hours W 7" L 9" H 4"  
**Intermediate \$40**



SU425 Sunday 8 am – 12 Noon

### Crossover No Fail Cat Gail Hutchinson

Learn my "no fail" cat head technique, three rod-wale with a step-up, and cross over. Choose from several color combinations. Top it off with a beautiful hand carved oak Indian swing handle.

4 Hours H 5" D 8"  
**Int/Adv \$52**



SU433 Sunday 8 am – 12 Noon

### Memories of the Sea Julie Kleinrath

Woven completely in round reed, this basket features glass crow beads that are added as the basket is woven. Finally, the basket is finished with a really special and easy rim! Many color choices will be available to choose from for the crow beads.

4 Hours H 2 1/2" D 6 1/2"  
**Beg/Int \$50**



SU434 Sunday 8 am – 12 Noon

### Twilled Clorox Cover Sharon Klusmann

Want to cover up those Clorox Wipes so you can leave them out on your counter? Weave this continuous twilled space dyed basket to do just that. It has a wooden base and wooden lid to hide your container. Specify color choice of pastel space dyed (pictured) or autumn space dyed.

4 Hours H 9" D 4"  
**All levels \$46**



**SU437** Sunday 8 am – 12 Noon  
**Hexahedron**  
**Karen Kotecki**

A hexahedron is a 3-dimensional figure with 6 equal sides. You will also construct your own mold that will be covered and captured in the basket. You'll be weaving a continuously-woven double-wall basket. Weave a first hex in natural to learn the techniques. Followed by the second in color in a pattern you design.

4 Hours W 2 1/2" L 2 1/2" H 2 1/2"  
**All Levels \$45**



**SU442** Sunday 8 am-12 Noon  
**Snack Bowl**  
**Elaine La Porte**

This useful basket begins on a wood base and is woven over a bowl. You will be able to use the bowl as a liner for the finished product. Twill continuous weave pattern with several color choices.

4 Hours H 4 1/2" D 7"  
**Beg/Inter \$40**



**SU444** Sunday 8 am – 12 Noon  
**Oil and Vinegar**  
**Becki Newsome**

Basket is woven on a wooden base with an attached handle in the center. This is a continuous twill weave. Emphasis will be stressed on the shaping of the basket. A rusty bow with choice of colored pips will be used for the embellishment. This is a fun, relaxing weave that everyone will enjoy (Bottles are not included).

4 Hours W 5" L 9" H 11"  
**All Levels \$40**



**SU445** Sunday 8 am – 12 Noon  
**Small and Large Nesting Napkin Set**  
**Billy Owens**

2 for the price of 1: The small and large napkin baskets are made of hand split white oak trees. Woven on a mold, this basket has a woven "Herringbone" bottom and will be an added attraction to any table on any occasion. I will share all things concerning the Ozark method of basketry. Everyone should finish in class.

4 Hours W 5&6" L 10&12" H 4"  
**All Levels \$55**



**SU446** Sunday 8 am-12 Noon  
**Lita's Tote**  
**Marilyn Parr**

Cute little basket is just the right size for a water bottle and snack or basic weaving tools! The base and leather handles are crafted by local Amish gentlemen. The spokes will be glued in and ready for weaving. There will be triple twine, split spokes and overlays inserted on spokes and rim, along with regular over/under weave.

4 Hours W 6" L 9 1/2" H 5"  
**Intermediate \$45**



**SU449** Sunday 8 am – 12 Noon  
**Shaker Tape Bar Stool**  
**Jean Reed**

Extremely well crafted and sturdy, hardwood barstools that are 24" in height will be used to teach you the basic over three twill pattern, referred to as herringbone. There will be some color choices of 100% cotton Shaker tape.

4 Hours W 13 1/2" L 18" H 24"  
**All Levels \$175**



SU453 Sunday 8 am – 12 Noon

### Whimsical Linda Scherz

Twine a simple pattern with two colors of waxed linen. The magatamas beads in the center swirl to the outer edge to create a fun design. The rim is a simple double braid. Lots of color options. Contact instructor to select your colors when you receive your class selections.

4 Hours D 2 3/4"  
Intermediate \$29



SU456 Sunday 8 am – 12 Noon

### Here Chick Chick Elaine Sinclair

This is DARN cute. Students will finish two, a rooster and a hen, in class. Free form, easy weaving, *fun* class. When you glue the face embellishment on you'll have to smile. Tie ons will vary. PS they fit over wine bottles too.

4 Hours H 12" D 13"  
All Levels \$40



SU460 Sunday 8 am – 12 Noon

### Cottage #2 Round Swing Eric Taylor

Try your hand at weaving brown ash on the smaller scale. All the same processes that are used in making the larger version are used to make this small beauty. Mold woven, with cherry base, swing handle and rims. Nimble fingers and good eyesight are a must. Bring a portable light if you have one.

4 Hours H 3 1/2" D 2"  
Beg/Int \$75



SU462 Sunday 8 am – 12 Noon

### Tea Bag Basket Kathy Taylor

This basket is made up of a combination of our "TigerAsh" and hand pounded black ash. I designed it originally for tea bags but have found many other uses. It works up quickly. Once the basket has had a chance to dry and shrink back to it original size you need only apply the single piece slotted cherry rim. A great basket for giving.

4 Hours W 4" L 5 1/4" H 3 3/4"  
Beg/Int \$50



SU465 Sunday 8 am – 12 Noon

### Maine Coon Wall Basket Judy Wobbleton

Woven in the style of a cat head this sturdy wall basket is all about shaping. Basket is accented with colored reed and finished with a sturdy wooden handle.

4 Hours W 5 1/2" L 8" H 9 1/2"  
Beg/Int \$35



SU458 Sunday 8 am – 12 Noon

### Washi Selina Straughn

Not sure what Washi is? Just ask a scrapbooker. Woven on slotted base. You will do start stop weave, continuous weave 2/1 twill, triple twine with reed and colored wire, weave in a couple wider rows adding Washi tape to them. Various patterns/colors to choose from. Traditional rim with a push in swing handle with finish off the basket.

4 Hours H 6" 14"w/handle D 9"  
Beg/Int \$42





SU469

### Tiny Tapestry Necklace

Pamula Zimmerman

Tapestry is a new weaving wave! Using a handmade, reusable tiny loom, weave your choice of bead styles, threads and recycled fibers to make a unique tapestry necklace. Select a charm from Pamela's personally handmade cache and bead soup to embellish the finished piece! Bring personal light, magnifier, sharp scissors. If you have fabric scraps or threads to incorporate, you can bring those, too!

4 Hours  
Beginner

Sunday 8 am - 12 Noon

W 3" L 4"  
\$58



SU427

Sunday 8 am - 12 Noon

### Scissor Pouch

Carolyn Kemp

Students will weave this scissor or knife pouch from select birch bark in a diagonal weave. The pouch is lined with a protective guard and rimmed with a unique bark surface. Standard basket tools are required with small clips and small packer or awl.

4 Hours  
Int/Adv

W 2" L 6-7"  
\$50

Want to see the pictures in a larger size. Want to see more angles of many of the baskets. All these wonderful baskets can be viewed on Dropbox. It's very easy but you must sign up for dropbox and create an account. Just go to [Dropbox.com](https://www.dropbox.com)

Sign up with create an account: Just takes your email address and a password

Dropbox does not solicit or send any kind of advertisements. If you don't go to dropbox again it will erase your account after about a year. NO fuss no muss.

It will prompt you asking where you want to go. Answer shared files. *Woven Together 2019*

Type in the following address:

. <https://www.dropbox.com/sh/asnr583bnv8kcpe/AADhc9ugrG-No-Q2TRspSZnka?dl=0>

OR go to our facebook page: NCbasketmakers or to our web page: NCbasketmakers.com and click on this link.

Here you will find all the pictures from *Woven Together 2019* brochure and many more angles for many of the baskets to view in a larger scale.

Hope this additional prompt will help in picking your class choices.

If you have any questions please contact us at [woventogether2019@gmail.com](mailto:woventogether2019@gmail.com)